

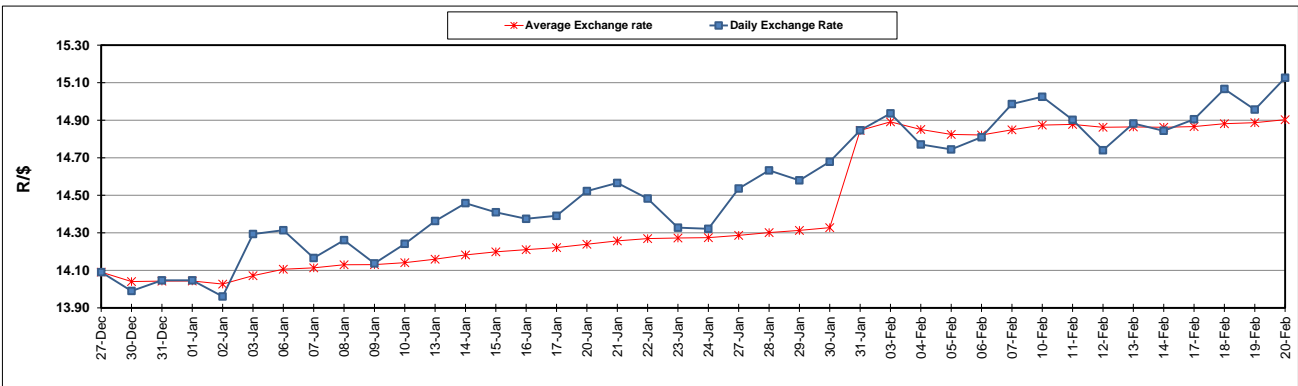
	PETROL 95 ULP	PETROL 93 ULP & LRP	DIESEL 0.05%	DIESEL 0.005%	ILL. PAR.
GAUTENG PUMP PRICE (SA c/l) AS FROM 05/02/2020	1,603.000	1,571.000	-	-	-
WHOLESALE PRICE (SA c/l) AS FROM 05/02/2020	-	-	1,457.260	1,462.660	924.728
SINGLE NATIONAL MAXIMUM RETAIL PRICE	-	-	-	-	1,176.000
BASIC FUEL PRICE - 20/02/2020 (SA c/l)	708.588	694.123	712.527	716.729	691.679
PRESS RELEASE CONTRIBUTION TO BFP 05/02/2020 - 20/02/2020 (SA c/l)	686.970	664.970	737.630	743.030	734.128
UNIT OVER/(UNDER) RECOVERY - 20/02/2020 (SA c/l)	(21.618)	(29.153)	25.103	26.301	42.449
AVERAGE BASIC FUEL PRICE 31/01/2020 - 20/02/2020	673.017	661.103	688.960	694.756	672.200
AVERAGE UNIT OVER/(UNDER) RECOVERY 31/01/2020 - 20/02/2020	16.553	6.467	49.670	49.274	62.528

ANALYSIS MOVEMENT OF AVERAGE OVER/(UNDER) RECOVERY

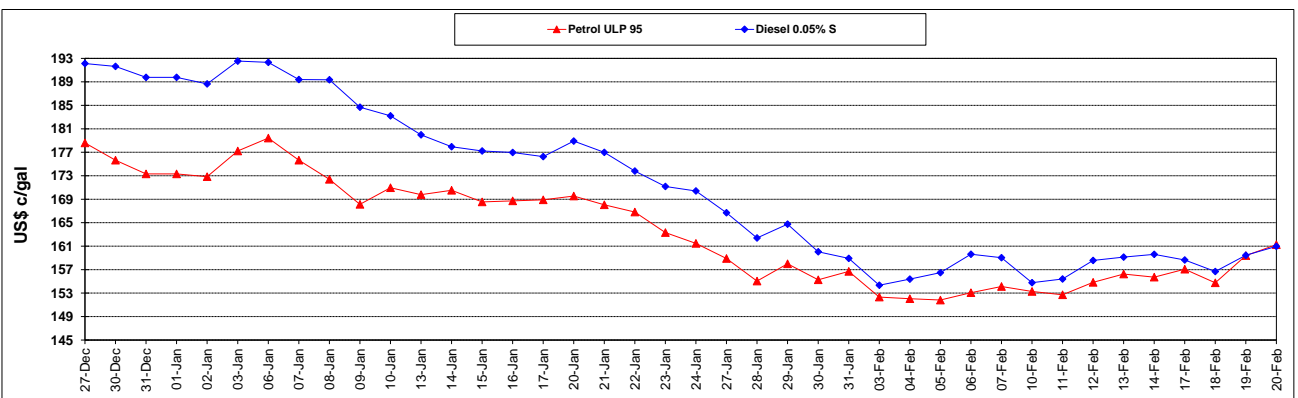
	PETROL 95	PETROL 93	DIESEL 0.05%	DIESEL 0.005%	ILL. PAR.
- MOVEMENT IN INTERNATIONAL PRODUCT PRICES	42.525	31.979	76.257	76.085	88.468
- MOVEMENT IN EXCHANGE RATE	(25.972)	(25.512)	(26.587)	(26.811)	(25.940)
AVERAGE UNIT OVER/(UNDER) RECOVERY 31/01/2020 - 20/02/2020	16.553	6.467	49.670	49.274	62.528

R/\$ EXCHANGE RATE - (R/\$15.1259 - 20/02/2020)

EXCHANGE RATE USED IN BASIC FUEL PRICE



INTERNATIONAL PRODUCT PRICES OF BASKET USED IN BASIC FUEL PRICE



BASIC FUEL PRICE IN SA CENTS PER LITRE

